

By: Corey Hanson, Water Quality Coordinator
 For: October 23, 2008
 RLWD Board Mtg.



“Yes for Minnesota” – Clean Water, Land, and Legacy Amendment

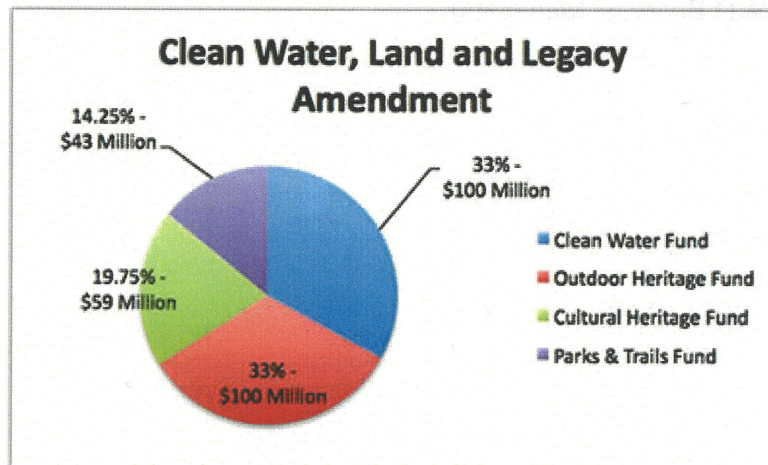
On November 4, 2008, Minnesota voters will have the opportunity to vote on the Clean Water, Land and Legacy Constitutional Amendment

- to protect drinking water sources;
- to protect, enhance, and restore our wetlands, prairies, forests, and fish, game and wildlife habitat;
- to preserve our arts and cultural heritage;
- to support our parks and trails; and
- to protect, enhance, and restore our lakes, rivers, streams, and groundwater by increasing the sales and use tax rate beginning July 1, 2009, by three-eighths of one percent on taxable sales until the year 2034

On the ballot, the Clean Water, Land, and Legacy Amendment will appear as:

Clean Water, Wildlife, Cultural Heritage, and Natural Areas

Shall the Minnesota Constitution be amended to dedicate funding to protect our drinking water sources; to protect, enhance, and restore our wetlands, prairies, forests, and fish, game, and wildlife habitat; to preserve our arts and cultural heritage; to support our parks and trails; and to protect, enhance, and restore our lakes, rivers, streams, and groundwater by increasing the sales and use tax rate beginning July 1, 2009, by three-eighths of one percent on taxable sales until the year 2034?



www.yesformn.org

The RLWD, along with many other state and local agencies, will benefit from the Clean Water Fund created by this amendment. The RLWD and its project partners have already from the one-time funding provided through the Clean Water Legacy Act(s). The money used to fund the

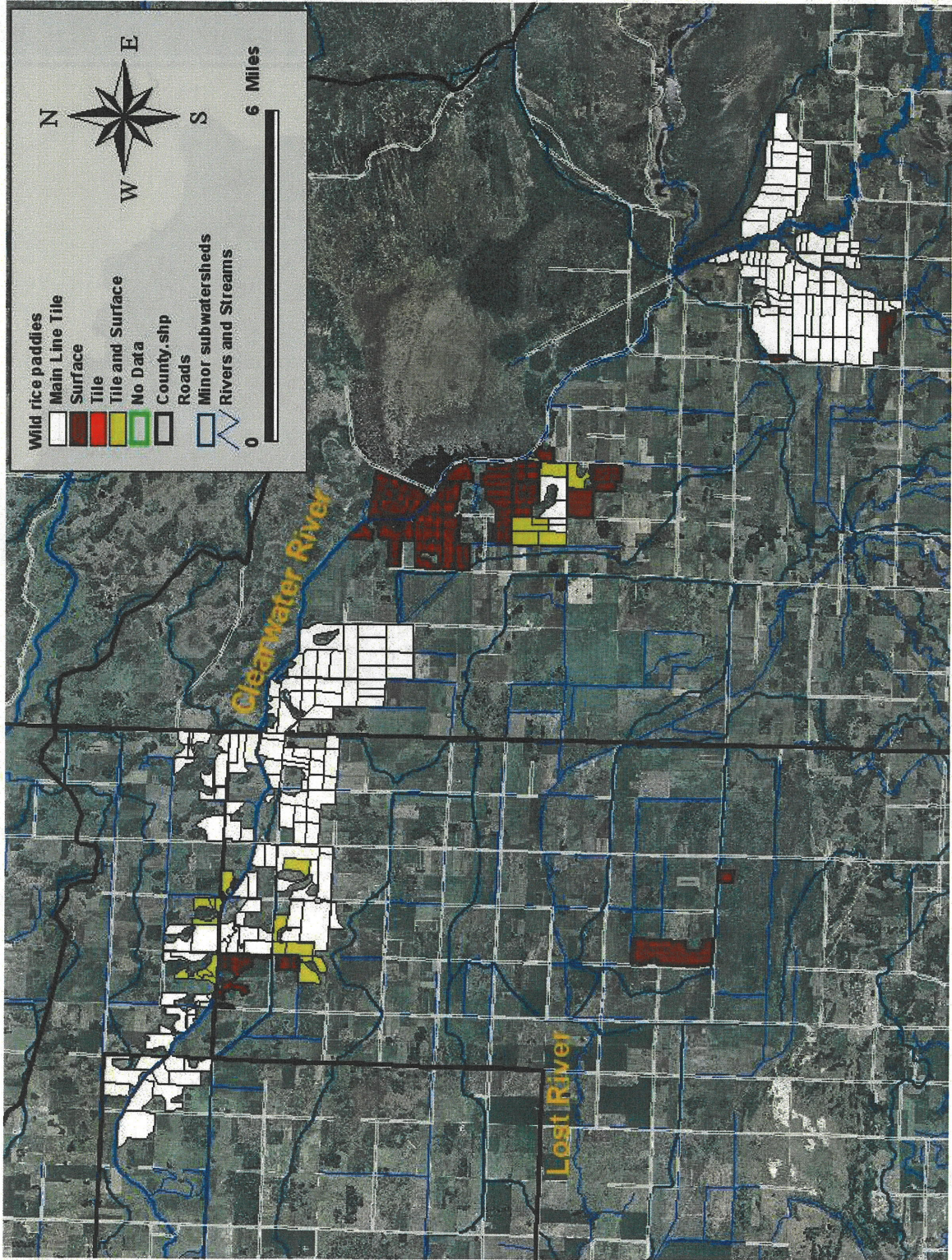
Clearwater River Dissolved Oxygen and Fecal Coliform TMDL Study came from the 2006 Clean Water Legacy Act and the Clearwater SWCD received funding for projects along Silver Creek from this same Act. The 2007 Clean Water Legacy Act provided funds for Surface Water Assessment Grant funds that are currently being used by the RLWD, Pennington SWCD, Clearwater SWCD, and the Red Lake SWCD. The 2007 CWLA also provided water quality protection project funds to the East Polk SWCD for the Union Lake Lakeshore Protection Project.

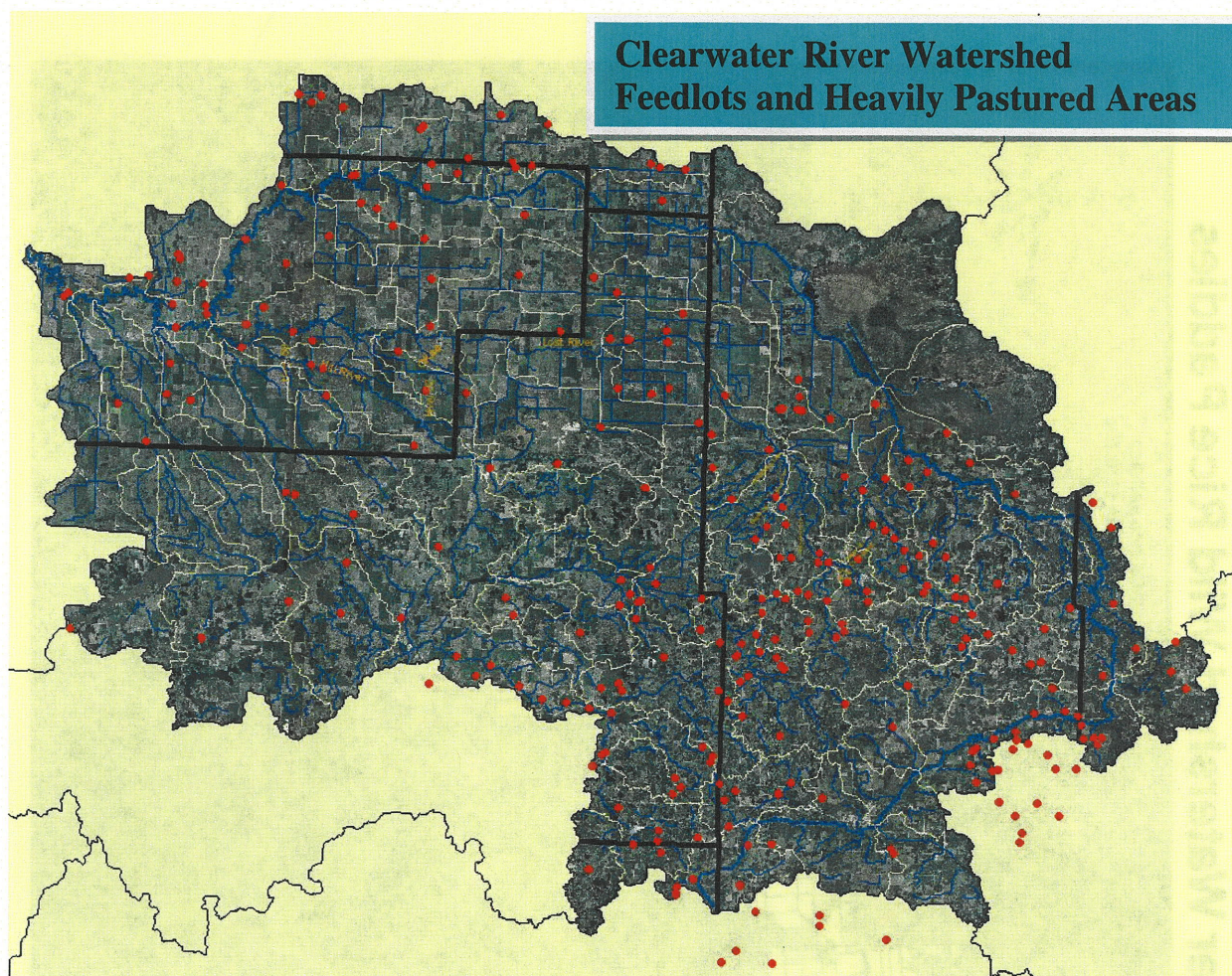
The benefit of this act will be the stable funding it will provide for natural resource projects. Obstacles to the passage of this amendment will likely be that it will be funded through an additional burden to taxpayers (3/8 of one percent equals \$0.375 for every \$100 spent) and that a non-vote counts as a "no" vote.

Clearwater River Dissolved Oxygen and Fecal Coliform TMDL

- To aid in calibrating the SWAT model, I compiled GIS shapefiles of feedlot locations and wild rice paddy locations. The feedlots were mapped using information provided by SWCDs and the MPCA. The wild rice paddies were mapped using aerial photos and farm maps, and then verified by the wild rice farmers. The wild rice paddy map not only shows the locations of the paddies, but also designates the type of drainage system used in each paddy (tile, surface, tile + surface).
- Entered rain data from hard-copy daily records collected with the Clearwater River watershed.
- A stakeholders' advisory meeting on September 12th. Much of the conversation encompassed wild rice paddies and SWAT model calibration progress/data needs.
- A six-month extension was requested for the RLWD's contract with the MPCA and the SWAT modeling contract between the RLWD and the EERC (with approval from the stakeholders' group and the RLWD Board of Managers).

Clearwater River Watershed Wild Rice Paddies





Thief River Watershed Sediment Investigation

- ❖ Collected water quality samples.
- ❖ Deployed Eureka Manta multi-parameter sondes were retrieved for data downloading, cleaning, and calibration.

Tile Drainage study

Data was downloaded from the water level loggers. The batteries powering the rain gauge data logger haven't been reliable, so a new battery was purchased for the project.

Other Notes

- ❖ River watch found high levels of E. coli in Nessel Creek on September 2nd.
- ❖ I finished compiling the erosion site information collected during the Red Lake River Rendezvous canoe trip. The sites were photographed and marked with GPS points. I put together a prioritized "catalog" of erosion sites by assessing the severity of each erosion site and giving each site a score based upon the photographs. While going through the

sites, it became evident that there is significant erosion occurring around every bend in the lower Red Lake River between Crookston and Grand Forks. The most severe sloughing, however, generally occurs along bends on which the riparian forest has been cleared. The document can be downloaded from the RLWD website at:

<http://www.redlakewatershed.org/waterquality/RLR%20Erosion%20Site%20Inventory.pdf>.

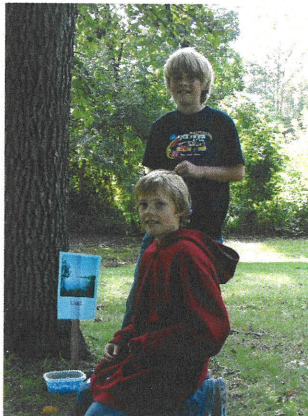
- ❖ Maintained continuous monitoring equipment at project 60E monitoring sites.
- ❖ Resumed working on data analysis for the Clearwater River habitat/Bioassessment Project so that report can be finished by the end of the year.

October Goals

- Finish Clearwater River Habitat/Bioassessment data analysis and report
- Enter all the data collected this year for submittal to the MPCA for entry into the STORET database.
- Writing Clearwater River Dissolved Oxygen and Fecal Coliform TMDL Study reports.
- Maintaining continuous monitoring equipment.

September Meetings and Events

- **September 3, 2008** –
 - TMDL technical advisory teleconference 8:30 – 10:00
 - Thief River Watershed sediment Investigation mid-project review meeting with Pete Fastner and Jim Courneya of the MPCA. 1:30 pm
 - The MPCA is still processing the time extension on the grant.
 - Now that we've completed this mid-project review, we can request the next payment when 50% of the grant funds have been spent.
- **September 12, 2008** - Clearwater River Dissolved Oxygen and Fecal Coliform TMDL Study Stakeholders' Advisory Group meeting, Clearbrook Community Center
 - Model calibration results
 - Discussion of wild rice paddy operation
- **September 10, 2008** – Pennington County Outdoor Education Day



- **September 16 and 17, 2008** – Northwest Minnesota Water Festival



- **September 26, 2008** – Red River Basin Monitoring Advisory Committee, Fertile, 9:30
 - State of MN water quality rule revisions
 - Add numeric standard for nutrients in rivers and streams
 - Modify the turbidity standard
 - Re-evaluate Class3 and Class 4 water us standards.

Future Meetings/Events

- **October 8, 2008** – Marshall County Water Resources Advisory Committee, 9:30am
- **October 24, 2008** – Red River Basin Monitoring Advisory Committee, Fertile, 9:30am
- **November 1, 2008** – STORET data submittal deadline
- **November 5, 2008** - Marshall County Water Resources Advisory Committee, 9:30am
- **November 21, 2008** – Red River Basin Monitoring Advisory Committee, Fertile, 9:30am
- **November 24, 2008** – Red River Basin Water Quality Team Meeting in Moorhead, 10am
- **December 15, 2008** - Red River Basin Water Quality Team Meeting at the RLWD